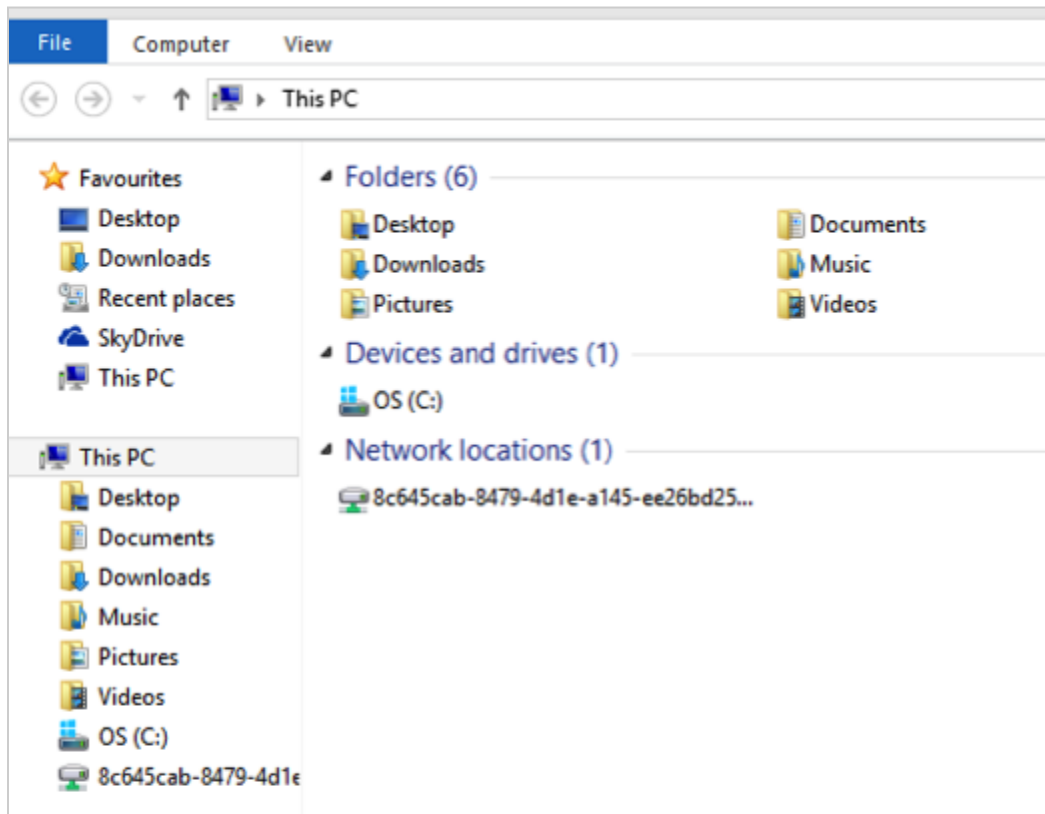


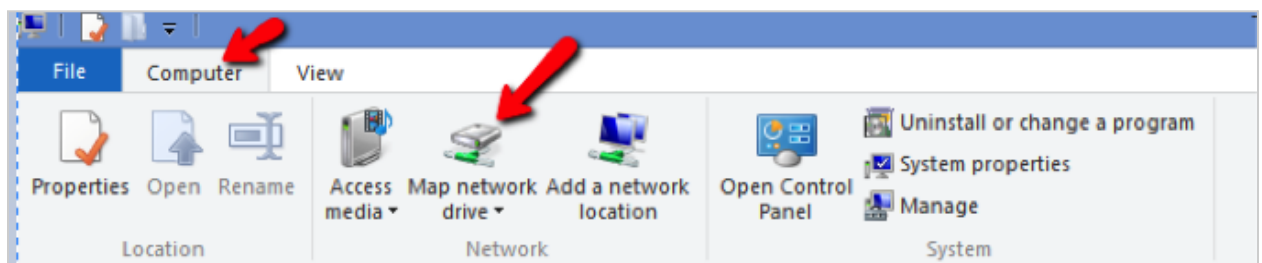
[Tab title] Windows 8.1/10/11

Setting up WebDAV for Windows 8.1/10/11

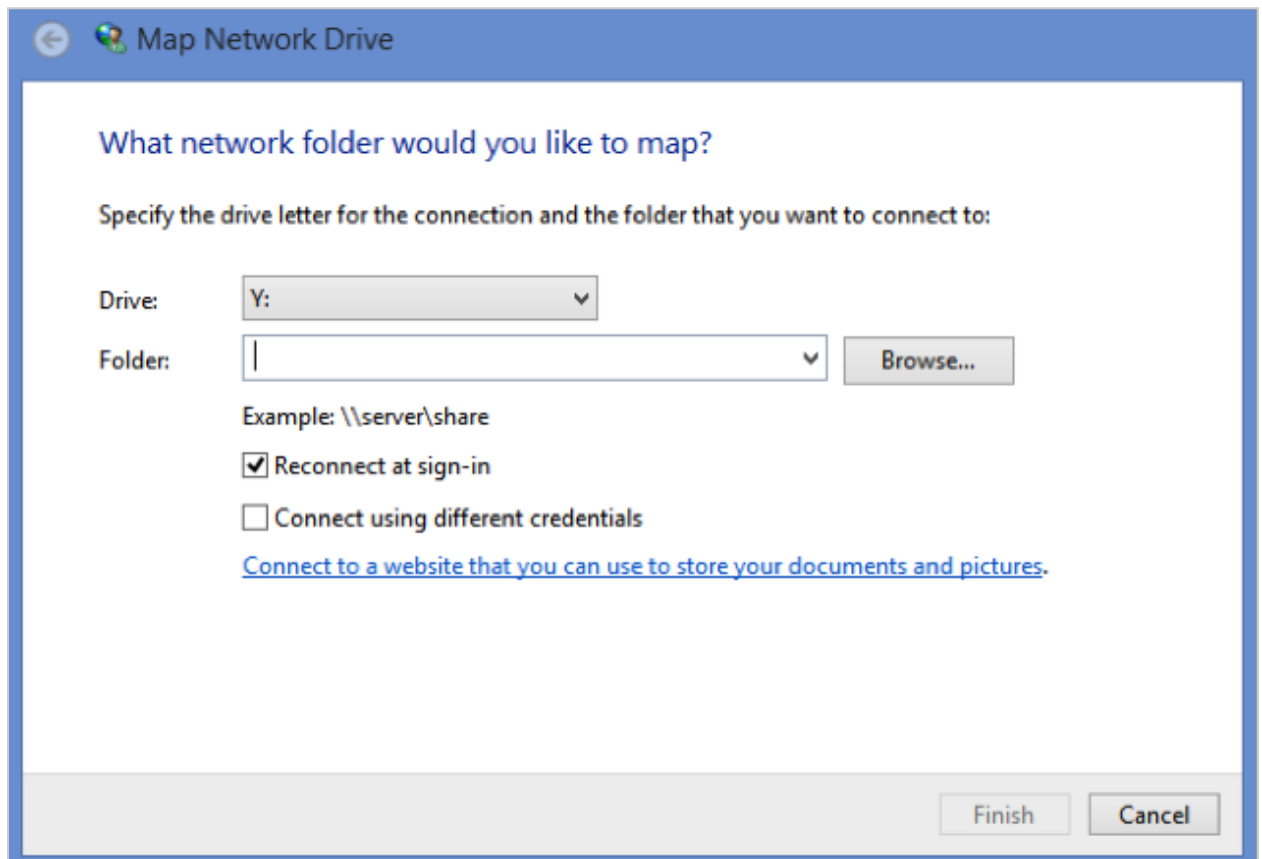
1. Open **Windows File Explorer** and select 'This PC' in the left-hand pane.



2. At the top of the File Explorer window, click **Computer** > **Map Network Drive** > **Map network drive**.



3. Select a vacant drive letter (e.g., Y) from the Drive drop down menu.



4. In the **Folder** field, type (or copy and paste) the URL as shown above in **Step 1** (shown above). Click **Finish**.
5. When prompted, enter your username and password and click OK.
6. You can now drag files and folders to and from your computer and the site Resources folder.

Alternate method of setting up WebDAV on Windows

If the process above yields connections errors, then you should try installing [Cyberduck](#), or, if you do not have administrator privileges try [WinSCP](#)

[Tab title] Windows 7

Remove, out of support

[Tab title] MacOS

Setting up WebDAV for MacOS

1. In the **Finder** menu bar at the top of the screen, select **Go > Connect to Server...**
2. In the **Server Address** dialog box, type (or copy and paste) the URL as shown above in **Step 1**.
3. Press the **+** button to save this path for future use.
4. Click **Connect**.
5. Type in your username and password and click **Connect**.

You will now see a window on your screen that represents the resources in your site. You can now drag and drop files into or out of this window and delete files by dragging them to the Trash.

Note: If you have problems with WebDAV support in very old versions of MacOS then consider using [Cyberduck](#).

[Tab title] Linux

Setting up WebDAV for Ubuntu-based Linux

1. Open the file browser and go to **File > Connect to Server...**
2. In **Server**, type (or copy and paste) the host name from the "Step 1" URL:
trunk-mysql.nightly.sakaiproject.org
3. In **Type**, select **Secure WebDAV (HTTPS)**
4. If not set, the **Port** should be **443**,
5. In **Folder**, type (or copy and paste) the last part of the "Step 1" URL: **[/dav/UOVH_179C_1394](https://trunk-mysql.nightly.sakaiproject.org/dav/UOVH_179C_1394)**
6. Enter your username and password and click **Connect**. You might be asked to accept a certificate.

You will now see a new drive under **Files**. This represents the resources in your site. It will act like any other folder on your computer. You can now drag and drop files into or out of this window and delete files by dragging them to the Trash.

Setting up WebDAV for Ubuntu-based Linux (console)

1. Open a new terminal.
2. If not already installed, install **cadaver**
3. Type in the command **cadaver**
https://trunk-mysql.nightly.sakaiproject.org/dav/UOVH_179C_1394
4. You might be asked to accept a certificate
5. Type in your username and password
6. Now you can download and upload documents from the command line.

Type **help** for all available commands.

[Tab title] Other Versions

Remove / rename

[Tab title] Downloadable Applications

Cyberduck for MacOS or Windows

1. Download the free Cyberduck WebDAV client from <https://cyberduck.io> and install. Cyberduck can also be purchased from the Mac App Store or Microsoft Store.
2. Launch Cyberduck and click the **Open Connection** button.
3. In **Server**, paste the URL which was copied in **Step 1**. This should autofill the required fields. Also, you can manually introduce the requested information:
 - Select WebDAV (HTTP/SSL)
 - In **Server**, add the hostname, eg, **sakaiproject.org**
 - In **Port**, type: 443
 - Click on More options and type (or copy and paste) in **Folder** the last part of the "Step 1" URL, for example, **dav/9662c425-02b5-4470-9e8d-845411381b8c**
4. Disable the Anonymous Login option.
5. Supply your username and password and click **Connect**.

Assuming you have entered the correct credentials you will now see a window on your screen that represents the resources that are in your site. Simply drag and drop between this window and other folders on your computer to transfer files to and from your site's resources folder.

You may like to save these settings for future connections. For information on how to do this and other things, visit <https://docs.cyberduck.io>.

WinSCP for Windows (no installation required)

Portable WinSCP can be downloaded from <https://winscp.net/eng/docs/portable> and unlike Cyberduck, **does not need “administrator privileges” to install** on one's desktop. This may be a better option for people who use a managed desktop and are unable to install applications.

Portable WinSCP is a ZIP file containing a 'standalone executable' WinSCP. (Note that there is also a regular Windows Installer version of WinSCP which performs in the same way but would require administrator rights to install.)

Before running WinSCP it is absolutely essential to check that you are running up-to-date Anti-Virus software – you can never be too careful about running software downloaded from the web.

To run WinSCP you should

1. Open the ZIP file and double click on “WinSCP.exe”, elect to run the file when asked.
2. Select the file **Protocol** as “WebDAV” and **Encryption** as “TLS/SSL”
3. Paste the URL which was copied as shown above in **Step 1** into the “**Host name**” box (note that it will only display the host name, eg, **sakaiproject.org**, in the field, but it does store the rest)
4. Supply your username and password and click “**Login**”.

Assuming you have entered the correct credentials you will see your desktop machine’s file store in the left-hand part of the window and your Sakai site in the right-hand pane. You may now drag and drop between your desktop and Sakai.

You can access online documentation by visiting <https://winscp.net/eng/docs/start>.